

Panel: MDP	NEMA 1	Volts 120/208	Phase 3	800 KVA 180.3		
Main 800 A	MLO -	Service	2 sets of (4 #600 MCM in 3-1/2" C.)			
MTG. Surface	A.I.C. :22,000	SHUNT TRIP MAIN				
CIRCUIT #	DESCRIPTION	BREAKER	A Phase	B Phase	C Phase	WIRE
1	Panel A	225 A 3 P	210	210	210	3 #4/0 & 1 #4 GR 2" C.
2	Panel B	100 A 3 P	39.5	27	30	4 #3 & 1 #8 GR 1-1/4" C.
3	Panel D	100 A 3 P	42	44	53.5	4 #3 & 1 #8 GR 1-1/4" C.
4	Panel K	200 A 3 P	103.9	113.4	98.9	4 #3/0 & 1 #6 GR 2" C.
5	Panel M	150 A 3 P	109	108	103	4 #1/0 & 1 #6 GR 2" C.
6	Spare	200 A 3 P				
7	Spare	150 A 3 P				
8	Surge Suppressor	30 A 3 P				Furnished
9	Spare	200 A 3 P				

Panel: D	NEMA 1	Volts 120/208	Phase 3	KVA 16.7		
MLO 100 A	Service	4 #3 & 1 #8 GR IN 1-1/4" C.				
MTG. Surface	A.I.C. :10,000	24 CIRCUIT PANEL				
CIRCUIT #	DESCRIPTION	BREAKER	A Phase	B Phase	C Phase	WIRE
1	LIGHTING	20 A 1 P	8			2 # 12 W/ GR 1/2" C.
2	LIGHTING	20 A 1 P	8			2 # 12 W/ GR 1/2" C.
3	LIGHTING	20 A 1 P		7		2 # 12 W/ GR 1/2" C.
4	LIGHTING	20 A 1 P		9		2 # 12 W/ GR 1/2" C.
5	LIGHTING	20 A 1 P			11	2 # 12 W/ GR 1/2" C.
6	RECEPTACLES	20 A 1 P			7.5	2 # 12 W/ GR 1/2" C.
7	RECEPTACLES	20 A 1 P	7			2 # 12 W/ GR 1/2" C.
8	RECEPTACLES	20 A 1 P	6			2 # 12 W/ GR 1/2" C.
9	RECEPTACLES	20 A 1 P	9			2 # 12 W/ GR 1/2" C.
10	RECEPTACLES	20 A 1 P		8		2 # 12 W/ GR 1/2" C.
11	RECEPTACLES	20 A 1 P		7		2 # 12 W/ GR 1/2" C.
12	RECEPTACLES	20 A 1 P		8		2 # 12 W/ GR 1/2" C.
13	RECEPTACLES	20 A 1 P	14			2 # 12 W/ GR 1/2" C.
14	RECEPTACLES	20 A 1 P		8		2 # 12 W/ GR 1/2" C.
15	RECEPTACLES	20 A 1 P		6		2 # 12 W/ GR 1/2" C.
16	EXT / EMER. LIGHTS	20 A 1 P		5		2 # 12 W/ GR 1/2" C.
17	ICE MAKER	30 A 2 P		15		2 # 10 W/ GR 1/2" C.
18	6 SPARES					
TOTAL AMPS			52	50	56.5	

Panel: A	NEMA 1	Volts 208	Phase 3	KVA 75.6		
MLO 225 A	Service	3 #4/0 & 1 #4 GR IN 2" C.				
MTG. Surface	A.I.C. :10,000	42 CIRCUIT PANEL				
CIRCUIT #	DESCRIPTION	BREAKER	A Phase	B Phase	C Phase	WIRE
1	A/C # 1 5 TON CU	40A 3P	16.8	16.8	16.8	3 #10 w/GR 1/2" C.
2	A/C # 2 5 TON CU	40A 3P	16.8	16.8	16.8	3 #10 w/GR 1/2" C.
3	A/C # 3 5 TON CU	40A 3P	16.8	16.8	16.8	3 #10 w/GR 1/2" C.
4	A/C # 4 10 TON CU	60A 3P	38.4	38.4	38.4	3 #8 w/ GR 3/4" C.
5	A/C # 5 10 TON CU	60A 3P	42	42	42	3 #8 w/ GR 3/4" C.
6	A/H # 1 w/ 11.3 KW HT	60A 3P	42	42	42	3 #8 w/ GR 3/4" C.
7	A/H # 2 w/ 11.3 KW HT	60A 3P	42	42	42	3 #8 w/ GR 3/4" C.
8	A/H # 3 w/ 11.3 KW HT	60A 3P	42	42	42	3 #8 w/ GR 3/4" C.
9	A/H # 4 w/ 11.3 KW HT	60A 3P	42	42	42	3 #8 w/ GR 3/4" C.
10	A/H # 5 w/ 11.3 KW HT	60A 3P	42	42	42	3 #8 w/ GR 3/4" C.
TOTAL AMPS			337.2	337.2	337.2	
CONCURRENT AMPS			210	210	210	

Panel: B	NEMA 1	Volts 120/208	Phase 3	KVA 11.6		
MLO 100 A	Service	4 #3 & 1 #8 GR IN 1-1/4" C.				
MTG. Surface	A.I.C. :10,000	24 CIRCUIT PANEL				
CIRCUIT #	DESCRIPTION	BREAKER	A Phase	B Phase	C Phase	WIRE
1	LIGHTING	20 A 1 P	8			2 # 12 W/ GR 1/2" C.
2	LIGHTING	20 A 1 P	8			2 # 12 W/ GR 1/2" C.
3	LIGHTING	20 A 1 P		7		2 # 12 W/ GR 1/2" C.
4	LIGHTING	20 A 1 P		9		2 # 12 W/ GR 1/2" C.
5	RECEPTACLES	20 A 1 P			7.5	2 # 12 W/ GR 1/2" C.
6	RECEPTACLES	20 A 1 P			7.5	2 # 12 W/ GR 1/2" C.
7	RECEPTACLES	20 A 1 P	6			2 # 12 W/ GR 1/2" C.
8	RECEPTACLES	20 A 1 P	6			2 # 12 W/ GR 1/2" C.
9	SPARE	20 A 1 P				2 # 12 W/ GR 1/2" C.
10	RECEPTACLES	20 A 1 P		8		2 # 12 W/ GR 1/2" C.
11	RECEPTACLES	20 A 1 P		9		2 # 12 W/ GR 1/2" C.
12	RECEPTACLES	20 A 1 P		8		2 # 12 W/ GR 1/2" C.
13	RECEPTACLES	20 A 1 P		7.5		2 # 12 W/ GR 1/2" C.
14	RECEPTACLES	20 A 1 P		6		2 # 12 W/ GR 1/2" C.
15	ALARM SYSTEM	20 A 1 P		5		2 # 12 W/ GR 1/2" C.
16	WATER HEATER	20 A 1 P			1.3	2 # 12 W/ GR 1/2" C.
10 SPARES						
TOTAL AMPS			35.5	33	31.3	

Panel: K	NEMA 1	Volts 120/208	Phase 3	KVA 37.9		
MLO 200 A	Service	4 #3/0 & 1 #6 GR IN 2" C.				
MTG. Surface	A.I.C. :10,000	42 CIRCUIT PANEL				
CIRCUIT #	DESCRIPTION	BREAKER	A Phase	B Phase	C Phase	WIRE
1	LIGHTING	20 A 1 P	6			2 # 12 W/ GR 1/2" C.
2	LIGHTING	20 A 1 P	9			2 # 12 W/ GR 1/2" C.
3	LIGHTING	20 A 1 P		7		2 # 12 W/ GR 1/2" C.
4	LIGHTING	20 A 1 P		10.5		2 # 12 W/ GR 1/2" C.
5	LIGHTING	20 A 1 P			6	2 # 12 W/ GR 1/2" C.
6	RECEPTACLES	20 A 1 P		6		2 # 12 W/ GR 1/2" C.
7	RECEPTACLES	20 A 1 P	6			2 # 12 W/ GR 1/2" C.
8	RECEPTACLES	20 A 1 P	6			2 # 12 W/ GR 1/2" C.
9	RECEPTACLES	20 A 1 P			10	2 # 12 W/ GR 1/2" C.
10,12	STEAM TABLE	30 A 2 P	17.1	17.1	17.1	3 #10 & 1 #12 GR 1/2" C.
11,13	STEAM TABLE	30 A 2 P	17.1	17.1	17.1	3 #10 & 1 #12 GR 1/2" C.
14	SLIDING DOOR REFRIG	15 A 1 P		15		2 # 12 W/ GR 1/2" C.
15	RECEPTACLES	20 A 1 P		9		2 # 12 W/ GR 1/2" C.
16	FROZEN FOOD SERVER	15 A 1 P		15		2 # 12 W/ GR 1/2" C.
17, 19, 21	DISHWASHER	50 A 3 P	42.7	42.7	42.7	3 #8 & 1 #10 GR 1/2" C.
18	DISHWASHER HOOD FAN	20A 1 P		10		2 # 12 W/ GR 1/2" C.
20	ROLL UP - PREP	20A 1 P		10		2 # 12 W/ GR 1/2" C.
22	ROLL UP - SERVER	20A 1 P		10		2 # 12 W/ GR 1/2" C.
23	ROLL UP - COOK	20A 1 P		10		2 # 12 W/ GR 1/2" C.
19 SPARE						
TOTAL AMPS			128.9	123.4	123.9	

Panel: M	NEMA 1	Volts 120/208	Phase 3	KVA 25.7		
MLO 200 A	Service	4 #3/0 & 1 #6 GR IN 2" C.				
MTG. Surface	A.I.C. :10,000	EMERGENCY 42 CIRCUIT PANEL				
CIRCUIT #	DESCRIPTION	BREAKER	A Phase	B Phase	C Phase	WIRE
1	LIGHTING	20 A 1 P	5			2 # 12 W/ GR 1/2" C.
2	LIGHTING	20 A 1 P			6	2 # 12 W/ GR 1/2" C.
3	HOOD FAN (3/4 HP)	20 A 1 P	13			2 # 12 W/ GR 1/2" C.
4	HOOD FAN (3/4 HP)	20 A 1 P		13		2 # 12 W/ GR 1/2" C.
5	MAKE UP AIR FAN (3/4 HP)	20 A 1 P			13	2 # 12 W/ GR 1/2" C.
6	ALARM SYSTEM	20 A 1 P		5	6	2 # 12 W/ GR 1/2" C.
7	RECEPTACLES	20 A 1 P	7			2 # 12 W/ GR 1/2" C.
8	RECEPTACLES	20 A 1 P	8			2 # 12 W/ GR 1/2" C.
9	RECEPTACLES	20 A 1 P			6	2 # 12 W/ GR 1/2" C.
10	LITG RECEPTACLES	20 A 1 P			8	3 #10 & 1 #12 GR 1/2" C.
11,13,15	REFRIG WALK-IN COMP.	60 A 3 P	15	15	15	3 #10 & 1 #12 GR 1/2" C.
12,14,16	FREEZER WALK-IN COMP.	60 A 3 P	26	26	26	3 #10 & 1 #12 GR 1/2" C.
17, 19, 21	FREEZER WALK-IN COMP.	60 A 3 P	26	26	26	3 #10 & 1 #12 GR 1/2" C.
18	REFRIG. EVAP. FANS	20 A 1 P		8		2 # 12 W/ GR 1/2" C.
20	REFRIG. LTG. & HT.	20 A 1 P	7			3 #8 & 1 #10 GR 1/2" C.
22	FREEZER EVAP. FANS	20 A 1 P		9		2 # 12 W/ GR 1/2" C.
23	FREEZER EVAP. FANS	20 A 1 P		9		2 # 12 W/ GR 1/2" C.
24	FREEZER LTG. & HT.	20 A 1 P			9	2 # 12 W/ GR 1/2" C.
25	FREEZER LTG. & HT.	20 A 1 P		9		2 # 12 W/ GR 1/2" C.
26	HOOD LIGHTING	20 A 1 P		6		2 # 12 W/ GR 1/2" C.
27	EMERGENCY EXT LTG	20 A 1 P		5		
16 SPARE						
TOTAL AMPS			116	120	117	

PROJECT NUMBER: Jesusis Ministries Dining Hall and Office Facility LIGHTING FIXTURE SCHEDULE:

NOTE:

OWNER, CONTRACTOR, SUB-CONTRACTORS, AND SUPPLIERS SHALL VERIFY ALL FEATURES AND DIMENSIONS PRIOR TO ORDERING AND COMMENCEMENT OF THE WORK. ROUGH-IN REQUIREMENTS FOR ALL ITEMS SHALL BE VERIFIED FOR COMPATIBILITY WITH CURRENT MODELS. AS SHALL COMPATIBILITY BETWEEN COMPONENTS. ALL COMPONENTS AND ASSEMBLIES SHALL BE INSTALLED IN ACCORDANCE WITH MANUFACTURER'S SPECIFICATIONS AND INSTRUCTIONS AND DOCUMENTATION OF INSTALLATION PERSONNEL AND METHODS SHALL BE MAINTAINED BY THE GENERAL CONTRACTOR TO INSURE COMPLIANCE WITH WARRANTY REQUIREMENTS. ELECTRICAL SUB-CONTRACTOR(S) SHALL SUPPLY AND INSTALL ALL ACCESSORIES AND INCIDENTAL MATERIALS, FITTINGS AND EQUIPMENT GENERALLY ASSOCIATED WITH ITEMS LISTED BELOW INCLUDING BUT NOT LIMITED TO MOUNTING HARDWARE, PIGTAILS, ADAPTERS, ESCUTCHEONS, BULBS, LAMPS, AND TRANSFORMERS.

CODE	QUAN	MFR	MODEL#/DESCRIPTION	LAMP	COMMENTS
A	64(DINING) 16 (KITCH)	LITHONIA	2GT8 232 A12 120 EB	2-32W-EL FL	RECESSED
B	14 (KITCH) 20 (OFFICE)	LITHONIA	2GT8 332 A12 120 EB	3-32W-EL FL	RECESSED
C	10	LITHONIA	GT 232 A12 120 EB	2-32W-EL FL	RECESSED
D	10	LITHONIA	5 B1 W	1-75W PAE 30	RECESSED
E	10	LITHONIA	LQM 3W 3R 120/277 EL N	FURNISHED	SURFACE
F	12	LITHONIA	ELM 2	FURNISHED	SURFACE
G	4	NUTONE	QT 140 FL	26 W FL	SURFACE
H	17	RED DOT	SJ31-2L80	2-150 W 38 PAR	SURFACE
J	4	LITHONIA	LTD COH 35 M 20 120 HEB W	35 W MH	SURFACE
K	9	LITHONIA	TUN 432 120 EB	4-32W-EL FL	SURFACE
L	6		SINGLE BULB PER REFRIDGE/FREEZER/MFG	1 75 W	SURFACE
M	1		LIGHT FOR RANGE HOOD PER HOOD MFG		SURFACE

NOTE: COOPER, SESCO APPROVED EQUALS

Electrical Schedule

Qty Description Brand Mfg Model Amps Watts Volt Size

1 800 AMP Main Disconnect

Kitchen Equipment (Electrical Only)

1 Dishwasher Meiko DV80.2
Wash Tank Heat 2x2 KW
Booster Heater 9KW
Wash Pump 1 HP
Total Load Amps
60.0A@208V,
42.7A@208V

1 DISHWASHER CONDENSATE HOOD EAGLE MODEL # HDC3636
9 PAIRS OF 6" PVC ROLLERS EAGLE MODEL NO. DTRA-6

1 Walk In Refrigeration BUSH 70 A 208 8'X24'

2 Walk In Freezer BUSH 70 A 208 8'X24'
BUSH 70 A 208 8'X24'

1 Ice Maker PRE-PURCHASED 20A 208-2P

1 Solid Door Refrigerator True MFG. TR2R-2S 10 115/60/1

1 Glass Sliding Door Refrigerator True MFG. GDM-37 15 115/60/1

1 Glass Door Freezer (Countertop) True MFG. GDM-7F 15 115/60/1
(DUAL TEMP. REACH IN MAY BE SUBSTITUTED AT OWNER'S DISCRETION TRUE MFG GDM-49DT)

2 Steam Tables- Sealed in Well Eagle Group SHT%-208 30 4750 240

HVAC

3-5 Ton-PACKAGE UNITS STRAIGHT COOL TEMPSTAR-
EXTERIOR SIDE WALL INDEPENDENT MOUNT, DUCT INTO ATTIC CAVITY

2-10 Ton -Split System-Double Condenser Variable Speed-CARRIER
EXTERIOR SIDE WALL INDEPENDENT MOUNT, DUCT INTO ATTIC CAVITY

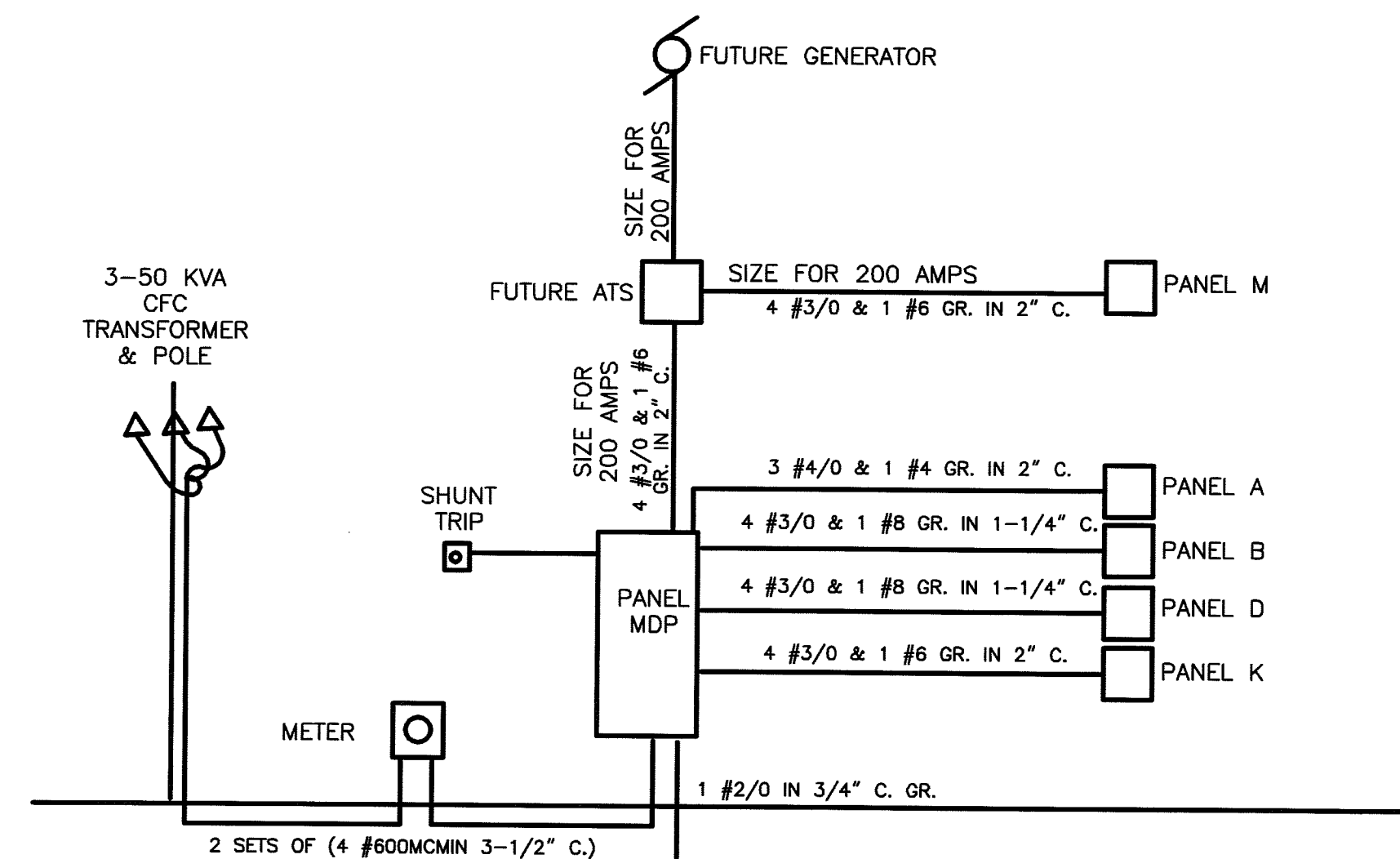
Fans

4 80 CFM Combo- Exhaust Fan with Light - Ceiling Mount

1 Kitchen Exhaust Fan CFM approx 8500 M.A.G Commercial AH85B 31.0/15.5 115/208-230

2 2.5 gallon Water Heaters GE Rheem 425740 1440 120V 137.5A

Emergency Lite w/ Battery Pack
Exit Sign w/ Battery Pack
Smoke Detectors



RISER DIAGRAM

N.T.S.