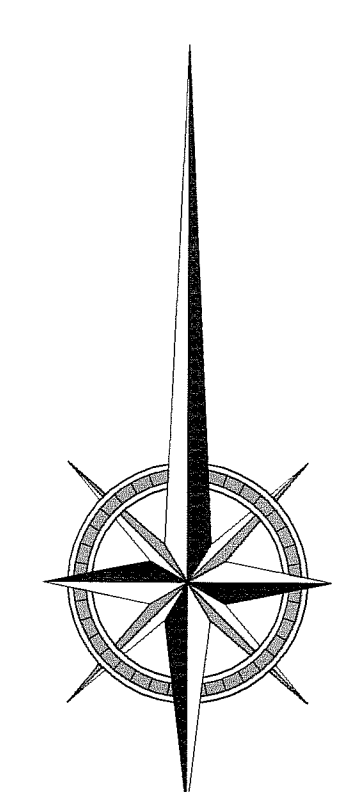


THIS PLAN MUST REMAIN ON JOB SITE



NOTE:
 1. SITE PLAN DEVELOPED FROM SURVEY PROVIDED BY OTHERS
 2. HANDICAP SPACE PROVIDED ELSEWHERE ON-SITE.

SITE DATA:
 PARCEL AREA = 321,767.92 SF = 7.39 AC.

EXISTING IMPERVIOUS SURFACE RATIO
 TOTAL BUILDING = 11,882.39 SF
 TOTAL PAVED AREAS = 1,163.19 SF
 OTHER IMPERVIOUS AREAS = 609.95 SF
 TOTAL IMPERVIOUS SURFACE AREAS = 13,655.53 SF
 IMPERVIOUS SURFACE RATIO = 13,655.53 SF/321,767.92 SF = 4.24%

PROPOSED IMPERVIOUS SURFACE RATIO
 TOTAL BUILDING = 11,240.00 SF
 TOTAL PAVED AREAS = 18,153.16 SF
 OTHER IMPERVIOUS AREAS = 2,153.00 SF
 TOTAL IMPERVIOUS SURFACE AREAS = 31,546.16 SF
 IMPERVIOUS SURFACE RATIO = 31,546.16 SF/321,767.92 SF = 9.80%
 ALLOWABLE IMPERVIOUS SURFACE RATIO = 0.70 OR 70 %

FLOOR AREA RATIO
 TOTAL BUILDING AREA = 11,200.00 SF
 FLOOR AREA RATIO (F.A.R.) = 11,200.00 SF/321,767.92 SF = 0.0348 OR 3.48%
 ALLOWABLE IMPERVIOUS SURFACE RATIO = 0.25 OR 25%

LOADING AREAS
 LOADING SPACES REQUIRED = ONE SPACE PER 10,000 SF OF TOTAL FLOOR AREA
 11,240.00 SF/10,000 SF = 1.12 SPACES.
 LOADING SPACES PROVIDED = 1

WATER QUALITY CALCULATIONS
 REQUIRED VOLUME = 3/4" OVER PROJECT AREA OF 321,767.92 SF
 3/4" x 321,767.92 SF x (1"/12") = 20,110.50 CF
 TOTAL VOLUME PROVIDED (AT ELEV. 14.33) = 26,813.99 CF

POND VOLUME
 Q(PRE-25 YEAR) = 1.77 INCH = 1.09 AC.FT.
 Q(POST-25 YEAR) = 3.04 INCH = 1.87 AC.FT.
 TOTAL VOLUME DISCHARGED = 34,149.12 CF = 0.78 AC.FT.

ESTIMATED FIRE FLOW (ISO) REQUIREMENTS:
 Q = 180(A)-1/2
 Q = 180(0.80(11,200))-1/2
 Q = 1,523.95 GPM

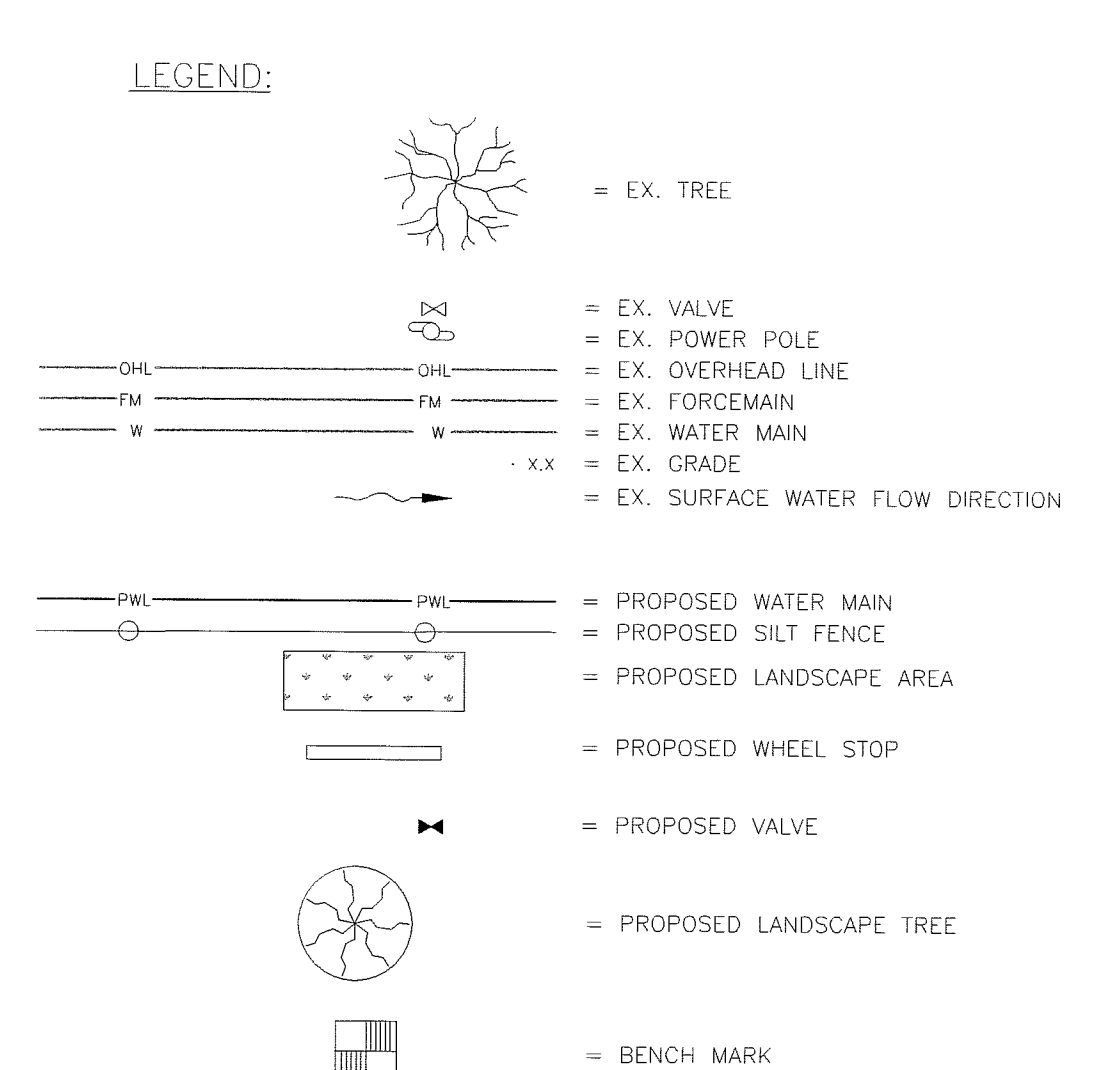
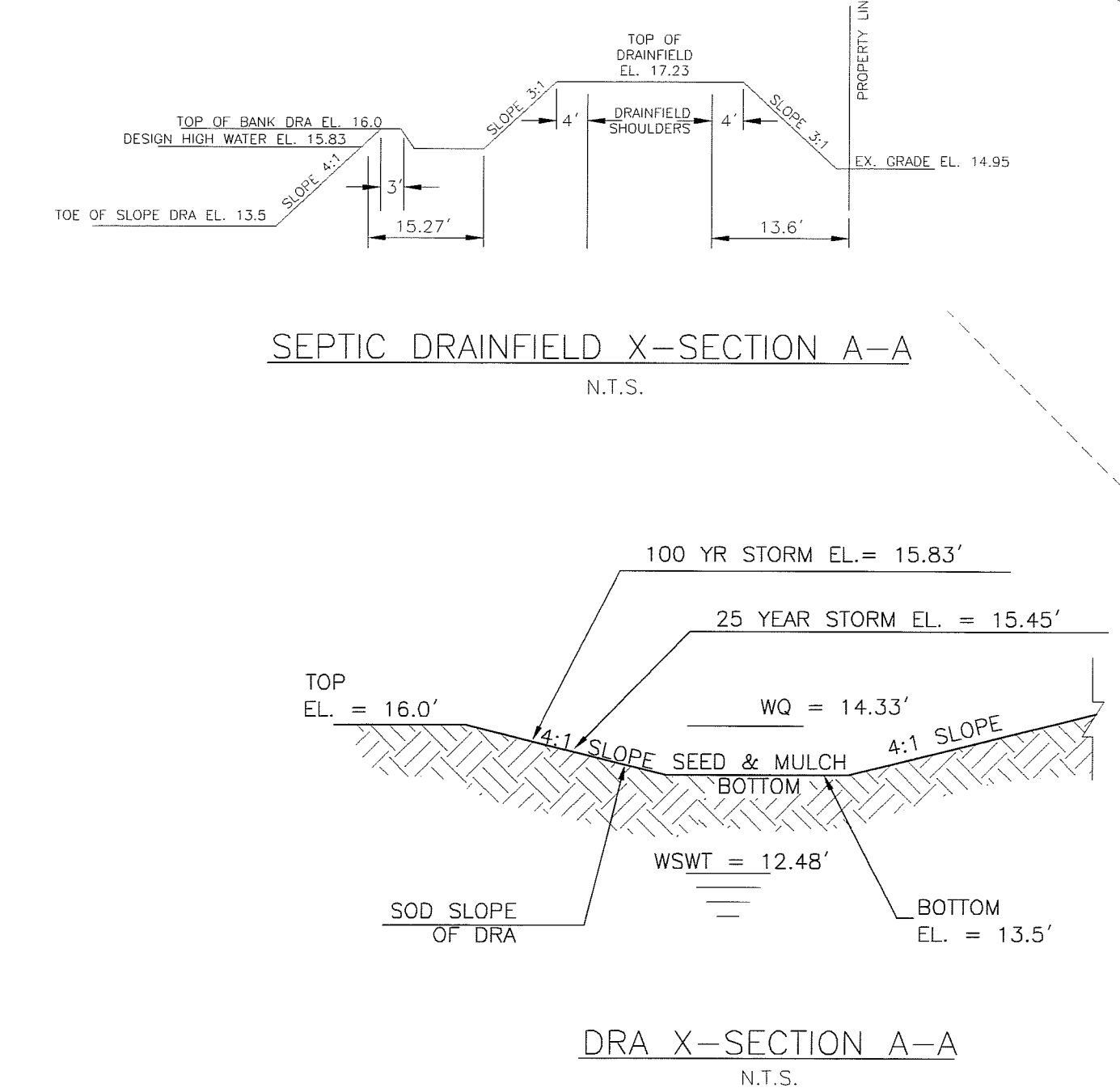
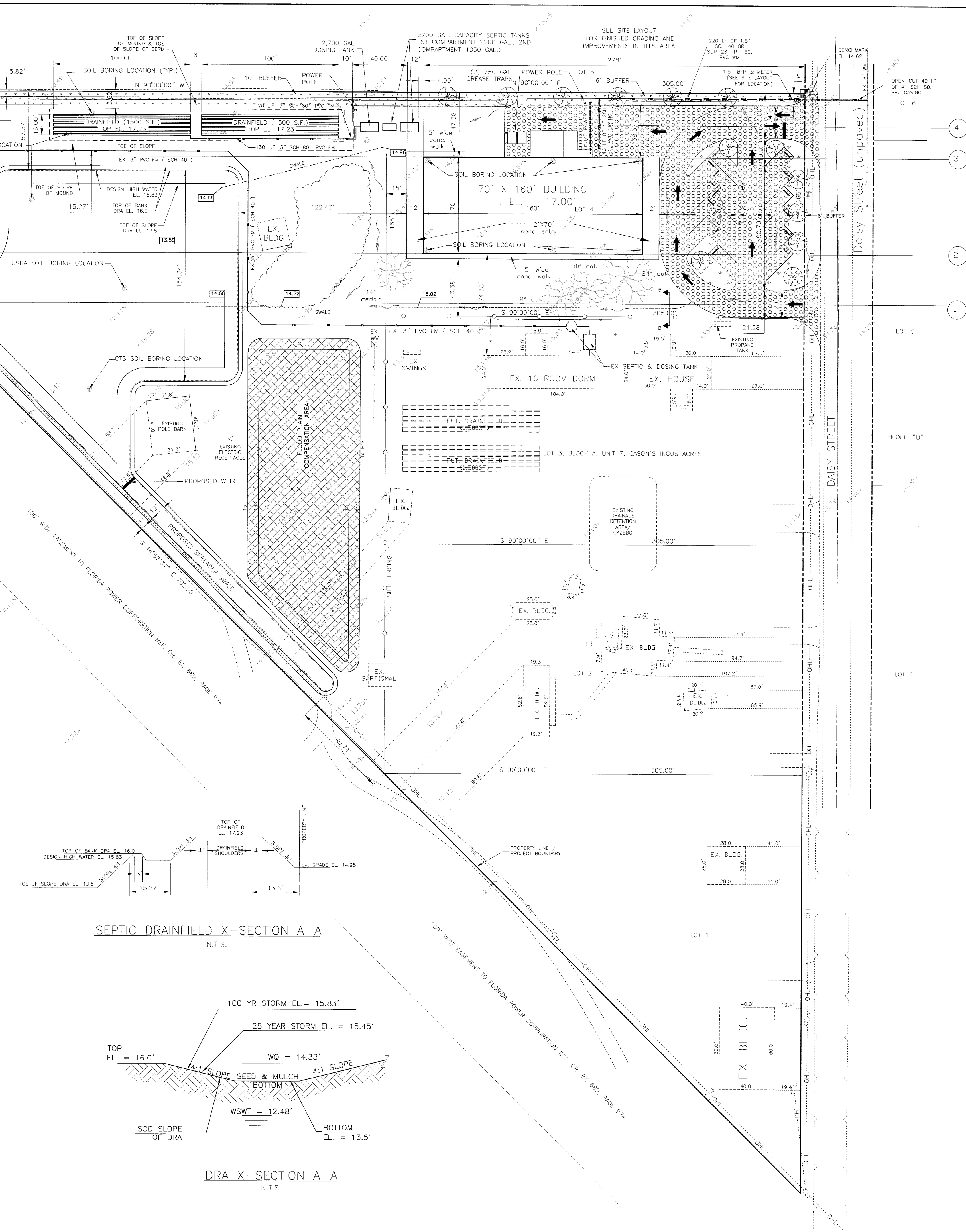
PARKING REQUIREMENTS
 PARKING REQUIRED PER LEVY COUNTY LAND DEVELOPMENT CODE
 TABLE OF REQUIRED PARKING SPACES LIST AS:
 OFFICES:
 ONE PARKING SPACE REQUIRED PER 300 SF OF OFFICE = 2,987 SF/ 300 SF = 9.96 PARKING SPACES.
 TOTAL PARKING SPACES REQUIRED = 9.96 = 10 SPACES.
 TOTAL PARKING SPACES PROVIDED = 16 SPACES (INCLUDING 1 HANDICAP SPACE(S)).

INTERIOR LANDSCAPING REQUIREMENTS
 INTERIOR LANDSCAPING REQUIRED = 10% OF PARKING AREA = 12,649.54 SF
 0.1 x 12,649.54 SF = 1,264.95 SF
 TOTAL INTERIOR LANDSCAPE PROVIDED = 10,423.75 SF
 INTERIOR TREE PLANTING = ONE TREE PER 400 PER SF OF LANDSCAPING = 1,264.95 SF
 1,264.95 SF/ 400 SF = 3.16 TREES.
 TREES IN BUFFERS = ONE TREE PER 40 LF OF BUFFER
 470 LF BUFFER / 40 = 11.75 TREES
 TOTAL TREES REQUIRED = 14.91
 TOTAL TREES PROVIDED = 15 TREES.

TREE PRESERVATION REQUIREMENTS
 TREES REQUIRED = ONE TREE PER 3,000 SF OF TOTAL AREA = 321,767.92 SF
 321,767.92 SF/ 3,000 SF = 107.26 TREE CREDITS.
 TOTAL TREES & TREE CREDITS TO BE PROVIDED = >108 TREES.

FEMA FLOOD ZONE DESIGNATION
 PROPERTY IS LOCATED IN FLOOD ZONE A12
 FIRM COMMUNITY PANEL No. 120586-0005B

LAND USE CODES
 PROPERTY LAND USE CODE = P1
 ADJACENT PROPERTY LAND USE CODES:
 NORTH = R2M
 SOUTH = C
 EAST = R1M
 WEST = C



DRAINFIELD INSTALLATION NOTES:

1. WHEN INSTALLING A DRAINFIELD SYSTEM THAT USES MINERAL AGGREGATE, ALL PORTIONS OF THE HEADER PIPE AND PERFORATED DRAIN PIPE SHALL BE INSTALLED IN AGGREGATE CONFORMING TO ASTM C33-86 OR LIGHTWEIGHT AGGREGATE CONFORMING TO ASTM C330-87 MEETING STATE OF FLORIDA DEPARTMENT OF TRANSPORTATION (FDOT) SPECIFICATION UNDER SECTION 901, "STANDARD SPECIFICATIONS FOR ROAD AND BRIDGE CONSTRUCTION, 1991" AND THE FOLLOWING GRADATION REQUIREMENTS.

SIEVE SIZE	2 IN.	1-1/2 IN.	1 IN.	3/4 IN.	1/2 IN.	3/8 IN.	NO. 4
PERCENT PASSING	90-100	35-100	15-100	0-70	0-50	0-30	0-5

IN ADDITION, NOT MORE THAN 3.75% BY WEIGHT OF THE AGGREGATE MATERIAL AT THE POINT OF USE SHALL PASS A #200 SIEVE.

2. MINERAL AGGREGATE MATERIAL SHALL HAVE A TOTAL DEPTH OF AT LEAST 12 INCHES EXTENDING THROUGHOUT THE WIDTH OF THE TRENCH / ABSORPTION BED. THE DISTRIBUTION PIPE SHALL HAVE A MINIMUM OF 6 INCHES OF AGGREGATE UNDER THE PIPE, BUT SHALL NOT EXCEED 10 INCHES UNDER THE PIPE WHEN THE TOTAL DEPTH OF AGGREGATE IS 12 INCHES.
3. THE DRAINFIELD IN PLACE SHALL BE PROTECTED FROM INFILTRATION OF EARTH BACKFILL BY A BARRIER OF POLYESTER BONDED FILAMENT. THE BARRIER SHALL BE PLACED ON TOP OF THE DRAINFIELD ONLY.
4. THE INSIDE DIAMETER OF THE DRAIN PIPE USED IN DRAINFIELDS SHALL BE DETERMINED BASED ON THE TYPE AND DESIGN OF THE PROPOSED ABSORPTION SYSTEM, HOWEVER, FOR STANDARD GRAVITY AGGREGATE DRAINFIELD SYSTEMS, INSIDE PIPE DIAMETER SHALL NOT BE LESS THAN 4 INCHES. PERFORATED PIPE SHALL HAVE TWO ROWS OF HOLES, AND A MINIMUM PERFORATED AREA OF 1-1/2 SQUARE INCHES PER LINEAR FOOT. PERFORATION SHALL BE LOCATED NOT LESS THAN 30" OR MORE THAN 60" FROM THE VERTICAL ON EITHER SIDE OF THE CENTERLINE OF THE BOTTOM OF THE PIPE. DRAINFIELD PERFORATION AREA AND HOLE CONFIGURATION SHALL ASSURE THAT EFFLUENT IS DISTRIBUTED AS EQUALLY AS POSSIBLE THROUGHOUT THE DRAINFIELD AREA. ALL PLASTIC PIPE SHALL CONFORM TO THE STANDARDS OF ASTM D 3034-88, STANDARD SPECIFICATION FOR TYPE PSM POLY(VINYL CHLORIDE) (PVC) SEWER PIPE AND FITTINGS (1998), HEREIN INCORPORATED BY REFERENCE, ASTM F 405-97, STANDARD SPECIFICATION FOR CORRUGATED POLYETHYLENE (PE) PIPE AND FITTINGS (1997), HEREIN INCORPORATED BY REFERENCE, OR ASTM F810-99 (1999) HEREIN INCORPORATED BY REFERENCE.

GARY KELTZ, P.E.
 # 54818
 LARRY HOGAN
 06-16-06

11445 Honey Jordan Pt.
 Inglis, Florida 34449
 Phone: (352) 447-5691
 Email: teams@manywaters.org

**Many Waters
 Resource Network,
 Inc.**

REV.	DATE	COMMENT

SITE PLAN

SEC 02 TWN 17S RNG 16E

**OFFICES & DINING HALL
 SITE DESIGN
 FOR
 JESUS IS MINISTRIES
 LEVY COUNTY, FLORIDA**

SCALE: 1" = 40'
 DRAWN BY: GK
 DESIGNED BY: GK
 CHECKED BY: GK
 FILE NAME: SITE.DWG
 DATE: 06-10-06
 JOB NUMBER: 000000

1